



DON'T DIG Trenchless Pipe Relining

Why replace all of your drainage pipes when you can permanently repair the broken sections without destroying your environment?

Advancements in pipe line repair and replacement technology has led to the development of 'Pipe Relining'. The process has been in use now for

over 25 years. "Trenchless" are your experienced, local professionals in this innovative technology.

Sewers back up in properties due to aging lines, misaligned joints, root infestation, calcification and ground movement, costing property owners thousands of dollars in damage to their homes and landscaping.

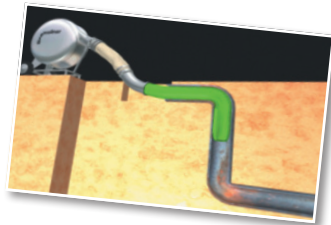
A fast, clean, permanent solution for fixing blocked drains.

GUARANTEED!



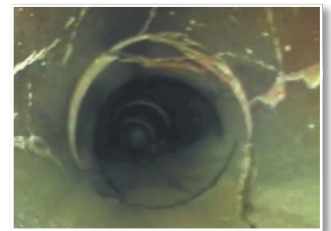
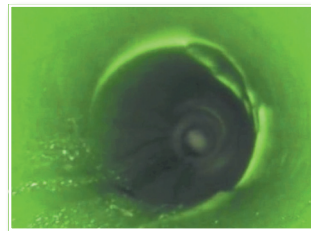
Inversion Pipe Lining Cured in Place Inversion Pipe Relining.

The technology behind Pipe Relining is to install a new pipe within the old. This new pipe is designed to improve the integrity of the original host pipe as well as prevent any future issues such as tree root penetration, the loss of storm water or any effluent escaping from the pipe.



Inversion Pipe Relining uses the aid of compressed air to turn the resin impregnated liner inside out as it enters the host pipe. This puts the resin in direct contact with the wall of the host pipe.

With Inversion Lining most repairs can be carried out from only one point of access into the effected service. This may include, an open pipe, an existing inspection opening at ground level, a removed toilet pan, or a small excavation. This becomes an advantage when repairing pipe lines that run under a road, a building, a house or even a garden.



The liner is then inflated to the requiredhann pressure to obtain complete surface contact between the liner and the original host pipe. The liner is then cured in place with the aid of hot water.

Due to this process, inversion lining gains excellent resin penetration into the existing pipe joints and any cracks within the pipe preventing any future tree root ingress. This resin penetration not only creates a structural bond between the host pipe and the new liner but also prevents any chance of roots growing between the host pipe and the new liner.



1
Clean the line with a high pressure water jetter, and carry out a camera inspection to determine the exact location and cause of the problems.



2
Prepare the liner. Cut the liner to the correct length, mix the appropriate amount of resin, and impregnate the resin into the liner.



3
Invert the liner into the pipe, inflate and then cure.



THE RESULT

DON'T DIG
Trenchless
Pipe Relining

NO mess!
fuss!
future worries!
Job done!

99 55 11 99
www.dontdig.com.au